

# Specifications - VLocker Access Terminal

Dimensions	19.7" x 19.7" x 75.8" (W x D x H)
Touch Screen Computer	15" TFT LCD
Casing	Aluminum die-casted
Processor	Intel Dual Core 1.8GHz
RAM	4 GB DDR3
Disk Drive	2.5" 60Gb Solid State
I/O Ports	1 x Gb LAN, 4 x Rear USB, 2 x RS232
Resolution	1024x768
Colours	16.2 Million
Touch Screen	Projected Capacitive Touch
Water & Dust Proof	1P66, Fanless, Ventless
Locker Controller Board:	VLocker Proprietary Technology
Power	DC 12V
Connections:	RJ45 Ethernet 100Mb, RS 485 Bus x 2, RS323 Serial Port, Coin acceptor interface
Reset Button	Factory Reset IP Settings, Clear Memory Tables
Note Acceptor	Optional
Dimensions	4" x 2" x 4" (W x D x H)
Weight	2.3 Lbs
Interface	USB
Currencies Accepted	Most
Voltage	12V DC Nominal (10.5-28V DC)
Current	2.0A peak when accepting
Operating Environment	32-40°F, 0-95% humidity
Bar Code Scanner	Optional
RS232 Signal	RxD, TxD, CTS, RTS
EA15 Area Imager Scan Engine	1D/2D
Voltage	+7V/DC to + 30V/DC
Current	600 mA (approx.)
Speaker	Driven by EV module
Dimensions	2" x 1" x 2"
RFID Reader	Optional
Frequency	13.56 MHz
Tag	ISO14443A
Operating Range	1" - 3"
Current	400mA
Dimensions	2" x 1" x 2"
Current	400 mA (max)
Power Supply	
Input	AC 100-240V
Output	DC 12V +-5%
Power Consumption	36W Max



**VLocker**  
www.vlocker.com  
Phone: +61 7 3209 7701  
Email: alan@vlocker.com  
Address: 20/17 Cairns Street  
Loganholme, QLD Australia

# VLocker

www.vlocker.com

## Access Terminal



- Payment and Access Options:
- Note Acceptor
  - Credit Card Acceptor / Reader
  - RFID
  - Barcode



The VLocker intelligent locker system range includes Access Terminals that work with cash and credit card payment methods as well as RFID and barcode devices such as wristbands, cards and key tags.

Proud to be a member of the following associations







VLocker Access Terminals

VLocker Access Terminals are manufactured in Australia from the finest raw materials such as electro-galvanized steel or stainless steel for long lasting quality.

Features:

- Rugged and secure construction built to withstand outdoor environments and break-in and vandalism attempts
- Powder coated finish for strong protection against the harsh elements
- Stainless steel rails
- Operating components and cash collection accessed separately

Options:

- Stainless steel
- Color of your choice
- Note and credit card acceptors
- RFID, Barcode access control

Languages Available

- English
- Chinese Simplified
- Chinese Traditional
- Japanese
- Korean
- Malaysian
- German
- Dutch
- Spanish
- Afrikaans
- Russian
- Plus other languages available on request
- Tamil
- French
- Hindi
- Arabic
- Turkish

1 Nov 2012 9:57:13 AM Please touch the screen to operate



Small lockers available: 56 Large lockers available: 23



1 Nov 2012 9:57:43 AM 请轻触屏幕进行操作



可租小储物柜:56 可租大储物柜:23



VLocker RFID Access Terminal

VLocker Access Terminals are fully compatible with RFID devices allowing use in cashless public venues or with staff or member RFID devices.

Features:

- Fast rental and re-entry process
- Optional Date of Birth PIN entry as well as RFID scan for additional security
- Use your own RFID devices or VLocker can supply
- Integration to your accounting system to confirm sufficient funds available for rental
- Single and multi-entry

VSOFT VLOCKER NEXT GENERATION SOFTWARE

Management Reporting

Many management and statistical reports are available either on-demand or scheduled or from real time web portal. These are delivered via email as pdf or excel attachments. Reports allow selection for any date range and offer summary by day and month:

- Revenue reports
- Payments by payment method
- Locker utilization statistics and graphs
- Audit transaction reports

Remote Access and Support

Access Terminals can be remotely controlled and configured. This allows for remote support activities such as trouble shooting,training, running reports, price updates and setting changes.

Vsoft Software Features

- Networked Access Terminals – allows multiple terminals to be used to access a group of lockers. This provides redundancy and reduces queuing time.
- Single or multi-entry options
- Session, day or multi-day rental
- Very flexible pricing methods
- Access methods including payment, RFID and Barcode.
- Easily configured to accept exiting staff or members cards
- Multi language screen display and audio voice instructions
- Multiple locker sizes allowed for each Access Terminal
- Multiple security levels for limiting access to administrator functions – Guest Services, Technician, Manager, Administrator



Vlocker RFID Rental Process



RWS Lockers - Revenue Summary for Month

For Last Month 1/8/2010 12:00:00AM to 31/8/2010

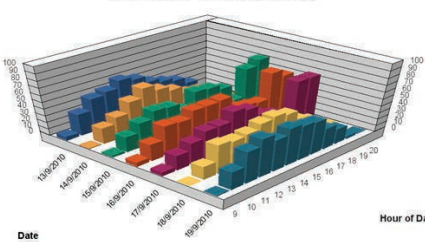
Paypoint	SMALL	LARGE	TOTAL
Casino			
Casino-1	\$20331	\$6114	\$26445
Casino-2	\$12255	\$3221	\$15476
TOTAL	\$32586	\$9335	\$41921

Pool		
Egypt-1	\$1574	\$1574
Egypt-2	\$574	\$574
Egypt-3	\$1086	\$1086
Egypt-4	\$1563	\$1563
Egypt-5	\$1855	\$1855
Egypt-6	\$1795	\$1795
Egypt-7	\$1127	\$1127
TOTAL	\$9573	\$9573

Locker Usage Trend

For Last Week 15/7/2010 12:00:00AM to 19/7/2010 11:59:59PM

Roller Coaster  
% Lockers Used Each Day



Revenue Summary

Up To: 22-Sep-2010 at 9:29:39AM

Today so far
4,145

Last 8 Days	
	Total
Wed 15/09/10	3213
Thu 16/09/10	6047
Fri 17/09/10	5583
Sat 18/09/10	3962
Sun 19/09/10	3537
Mon 20/09/10	4283
Tue 21/09/10	4145
Wed 22/09/10	170
Total	30941

WAVE POOL

Last 8 Weeks		Last 12 Months	
	Total		Total
Sun 08/08/2010	26,824	Feb 2010	31,081
Sun 15/08/2010	26,295	Mar 2010	83,367
Sun 22/08/2010	25,837	Apr 2010	101,926
Sun 29/08/2010	22,281	May 2010	96,649
Sun 05/09/2010	22,170	Jun 2010	108,790
Sun 12/09/2010	26,735	Jul 2010	123,117
Sun 19/09/2010	31,293	Aug 2010	115,470
Sun 26/09/2010	8,598	Sep 2010	82,351
Total	194,032	Total	742,751